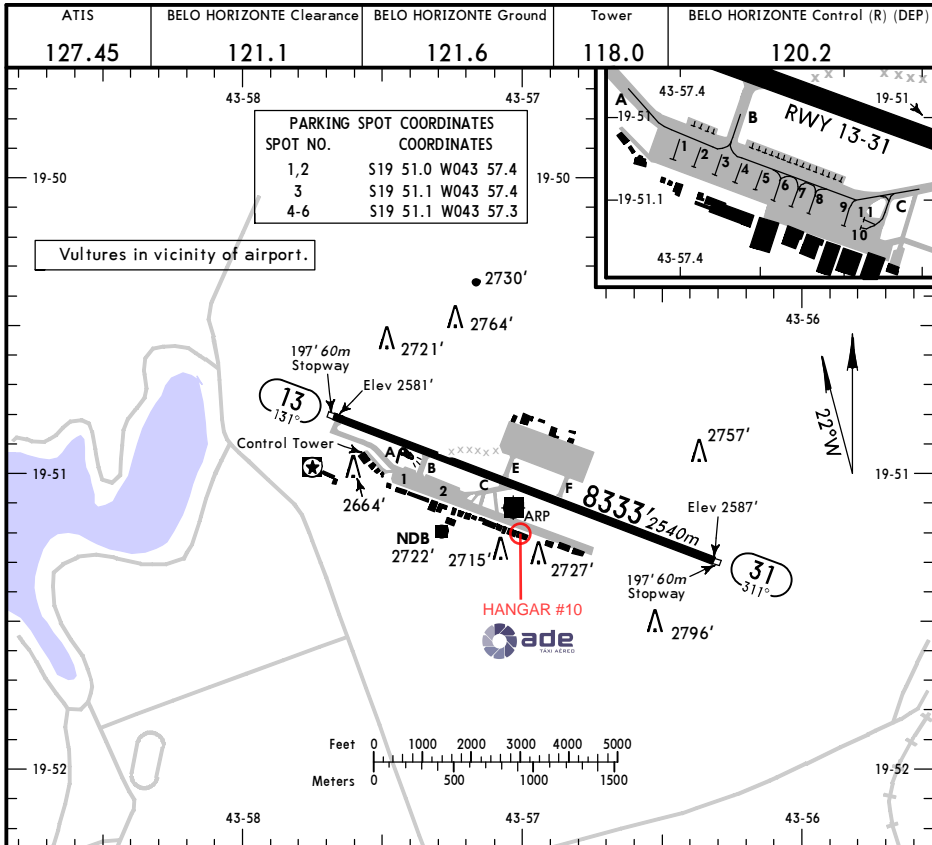


SBBH/PLU
 Apt Elev **2589'**
 S19 51.1 W043 57.0

JEPPesen
 25 NOV 11 **(10-9)**

BELO HORIZONTE, BRAZIL
 PAMPULHA-CARLOS
 DRUMMOND DE ANDRADE



RWY		USABLE LENGTHS		LANDING BEYOND		TAKE-OFF	WIDTH
				Threshold	Glide Slope		
13	31	HIRL	① grooved	RVR			148' 45m

① RWY 13 Grooved from the first 656' (200m) to 3674' (1120m).

TAKE-OFF & DEPARTURE PROCEDURE			
All Rwys			
Take-Off Alternate Apt. Filed		Regular	
RCLM & RL			
2,3 & 4 Eng Jet or Turbo Prop	600m	All Acft	Cat A Aircraft Landing Minimums

DEPARTURE PROCEDURE: IFR departures must comply with published SID's.

ADC - SBBH

WGS-84

ATIS 127.450	CLRD 121.10	GNDC 121.60	TWR 118.00
--------------	-------------	-------------	------------

